

## DEVELOPMENT OF A COMBINED INSECT TRAP FOR WHITEFLY (*Bemisia tabaci*) AND TOMATO LEAF MINER (*Tuta absoluta*) MANAGEMENT

MOHAMMED SAEED MIRZA and ABDI IBRAHIM ABDI

Dept. of Plant Protection, College of Agricultural Engineering Sciences, University of Duhok, Kurdistan Region-Iraq

(Received: May 8, 2-19; Accepted for Publication: September 17, 2019)

### 1. ABSTRACT

Whitefly *Bemisia tabaci* and tomato leaf miner *Tuta absoluta* are two important insects that are causing serious damage to crops in protected vegetable cultivation. There is an international call from scientists to find a non-chemical way to manage those pests. This study tested the effect of a new combined light trap with different colors, named GLT trap, on the management of whiteflies and tomato leaf miners in protected vegetable cultivation. The results showed that whiteflies are significantly attracted to the yellow light traps (828 insects) compared to (73 insects) on white traps which captured the least number of insects. Although whitefly is diurnal, a higher number of insects were captured by the yellow-light colored traps (910 insects) than both yellow traps without light (302 insects) and light without color (51 insects) in 6 days. This showed the superiority of GLT trap over the yellow traps by about three times and about 20 times more than light traps without colors. In addition, a higher mean number of leaf miners were captured by yellow traps (14.33), and the lowest number of insects (3.5) was captured on violate traps. The new GLT trap is a promising IPM mean to manage those important insects in greenhouses in both developed and developing countries. It is an inexpensive, effective, and homemade way to control whiteflies and tomato leaf miners without negative consequences.

**KEYWORDS:** Insect trap, Whitefly, *Tuta absoluta*, Leaf miner, Tomato, Broccoli, GLT trap.

<https://doi.org/10.26682/ajuod.2019.22.2.3>

### 2. INTRODUCTION

Pests are the main limiting factors in cultivation of vegetables under controlled conditions (Mutwiwa & Tantau, 2005). Among those pests, two important insects are causing serious damage to crops, whiteflies (Berlinger, 1980; Gillespie & Quiring, 1987; Gillespie & Quiring, 1992; C. Chu & Henneberry, 1998; Chen *et al.*, 2004; Hamza, 2017; Varga *et al.*, 2018) and tomato leaf miner (Al-Jboory *et al.*, 2012; Garzia *et al.*, 2012; Abbas, 2014; Pezhman & Saeidi, 2018; Varga *et al.*, 2018).

Whiteflies attack the plants either directly by sucking the cell sap or indirectly by providing good environment for sooty mold (Berlinger, 1980; Webb *et al.*, 1985; Varga *et al.*, 2018). Intensive studies have been conducted to control or manage this important insect (Macdowall, 1972; Gillespie & Quiring, 1987; Gillespie & Quiring, 1992; C.-C. Chu & Henneberry, 1999; Ashfaq *et al.*, 2005; Mwangi, 2015; Perdikis *et al.*, 2016; Varga *et al.*, 2018). The aim was to provide a non-chemical mean to manage whiteflies. Biological control of whiteflies has

been investigated by Mwangi (2015); yet it was reported that it is not very successful due to several limitations (Gillespie & Quiring, 1987). Light traps have also been used by Ashfaq *et al.* (2005) to capture insects. Macdowall (1972) suggested to use light traps for managing whiteflies as an alternative for pesticides. In addition, based on previous studies, Mutwiwa & Tantau, (2005) used UV lamp with yellow sticky traps for trapping whiteflies in greenhouses in Germany. Moreover, colored traps have been used to attract this insect (C.-C. Chu & Henneberry, 1999; Mwangi, 2015). Mwangi (2015) reported that traps with yellow and blue colors are more attractive to pest than the no-color traps; however, traps treated with pesticides provided better results (Mwangi, 2015). According to the literature (Webb *et al.*, 1985; Kitterman, 1997; Steiner *et al.*, 1999; Lu *et al.* 2012; Perdikis *et al.*, 2016), yellow tricky traps and yellow color based traps have been used intensively as an IPM mean to manage whiteflies in greenhouses. Furthermore, C. Chu & Henneberry (1998) compared a trap called "CC" traps to yellow sticky traps, and the later provided better results. Although yellow traps

are minimizing the population density of whiteflies, they can generally be used for monitoring the pest (Gillespie & Quiring, 1987; Gillespie & Quiring, 1992), or as an additional mean to help other management strategies. Previous studies varied in reporting the successfulness and the failure of yellow traps in managing whiteflies (Webb *et al.*, 1985). Accordingly, the need to develop another type of management rather than pesticides became crucial.

Tomato leaf miner is also considered one of the most important pest in greenhouses planted with tomato due to the production loss that estimated by up to 90% (Tsisia *et al.*, 2016) to even 100% (Lazgeen *et al.*, 2013; Pezhman & Saeidi, 2018) without proper management (Roda *et al.*, 2015; Hamza, 2017; Wafula *et al.*, 2018). This is because this insect is causing damage to leaves, stems, buds and fruits of tomato plants (Garzia *et al.*, 2012; Pezhman & Saeidi, 2018). Garzia *et al.* (2012) listed the distribution of this pest in details. They reported that it was observed first in Iraq in 2010. According to the literature (Korycinska *et al.*, 2009; Al-Jboory *et al.*, 2012; Cocco *et al.*, 2013; Pezhman & Saeidi, 2018), and our observation in the field, even with using pesticides, it is hard to control this extremely challenging pest (Mutwiwa & Tantau, 2005; Wafula *et al.*, 2018). Therefore, scientists searched for IPM means to manage this pest (Wafula *et al.*, 2018). One of those means included biological control (Torres *et al.*, 2002; González-Cabrera *et al.*, 2011; Abbas, 2014; Tsisia *et al.*, 2016); yet, this method has several limitations. For example, in a recent investigation, some strains of nematodes were used to control this pest (Husin & Ali, 2017); yet, it is hard for farmers to access those strains in developing countries. In addition, they may increase the production costs. The limitation of this type of management is discussed by Abbas (2014) in details. Moreover, pheromone traps

(Vacas *et al.*, 2011; Lazgeen, *et al.*, 2013; Aksoy & Kovanci, 2016; Berxolli & Sh, 2017); and light traps (Aksoy & Kovanci, 2016; Pezhman & Saeidi, 2018) have also been used to manage this insects. Due to the unsatisfied results in managing this pest, scientists tried to combine different types of traps and ways for controlling purposes. The combination of light traps with pheromone has improved trapping of this pest (Ettaib *et al.*, 2016; Pezhman & Saeidi, 2018). Moreover, yellow (Tsisia *et al.*, 2016), blue, green, white and red traps (Mahmoud *et al.*, 2014) with pheromone have been combined for the same purpose. However, Abbas (2014) and Abbas & Chermiti (2012) discussed many reasons of why mass trapping by pheromone and biological control are not successful means to control this pest.

Accordingly, the pest resistance issue; the environmental issues; the people desire of pest and pesticides free products; and the insufficient efficiency of above mentioned methods to control pests are suggesting to provide a new and more effective method to control these two pests (Mutwiwa & Tantau, 2005). In addition, we used different chemical and non-chemical methods to manage this pest; yet, the pest was increasing in population density and causing more damage, even with taking into account all suggestions provided in the literature. Therefore, we developed a test trap combining colors with light, and the primary results were surprising (Figure 1).

This study examines a new non-chemical method to manage two greenhouse pests, whiteflies and tomato leaf miner. Particularly, it tests the hypotheses that: (i) Different color will attract whiteflies and tomato leaf miner variously; (ii) Insects will respond to the light colored traps. (iii) The combined (colored-light) traps will trap more insects than light or color only. (iiii) the traps can be used for insect management inside greenhouses.



**Fig. (1):** The test colored-light traps showing a high number of captured leaf miner.

### 3. MATERIALS AND METHODS

The study was conducted inside greenhouses in Domiz camp of refugees, Duhok, Kurdistan Region of Iraq. Four planted and slightly infected greenhouses were selected for the study. Homemade traps were developed using the following materials: transparent plastic containers (volume 10 L), six colored fabric (white, green, yellow, red, violet and blue), transparent tarpaulin, sticker glue which is used for mice and rats trapping, plastic rope and rechargeable lights (type; KHHY, Chinese made KH-9077) that can be charged by electricity and solar. The materials were put together by covering the transparent plastic containers with the fabric, then one layer of transparent tarpaulin was covered by the sticker glue and then covered over the fabric (Figure 2). The rechargeable lights were fixed inside the containers. Finally, the traps were distributed randomly in the both sides of the greenhouses as the population intensity of the insects is higher in the sides than

in the middle of the greenhouses. The six colored traps were used at night for approximately 5 hours. Three replications were used for leaf miner insect in two greenhouses planted with tomato; whereas, four replications for whitefly insect were used in two greenhouses planted with broccoli. After identifying the most attracted color for whiteflies, three types of traps were installed (yellow traps without lights, light without color and light with yellow color). For this part of the study, three replications were used in different greenhouses to determine the effect of each type trap. The number of whiteflies were also counted every day for 6 days. The data were collected by counting the number of insects every day for six days. The results were compared, and the differences between different colored traps were provided using GenSTAT software 15th edition (VSN International Ltd, UK), and Microsoft excel 2016.



Fig. (2): The preparation of colored-light traps including their parts.

#### 4. RESULTS AND DISCUSSION

The results supported the first hypothesis that different color will attract whiteflies and tomato leaf miner variously. The results showed that there are high significant differences in capturing both insects in terms of color of traps, different days as well as the interaction of trap color and the days (Table 1). This means that leaf miners and whiteflies responded differently

to various colors in different days. It is known that tomato leaf miner is a nocturnal insect (Garzia, *et al*, 2012); however, whiteflies are diurnal insects (Ekbom, 1982). Interestingly, the results provided crucial information about the activity of whiteflies at night. While there was no sources of light rather than light-traps, whiteflies attracted to colored-light traps significantly.

Table (1): Analysis of variance for the studied traits

Source of variance	Probability of significance	
	NO. Tomato leaf miner	NO. White fly
Colors	<.001	<.001
Days	<.001	<.001
Colors * Days	0.767	<.002

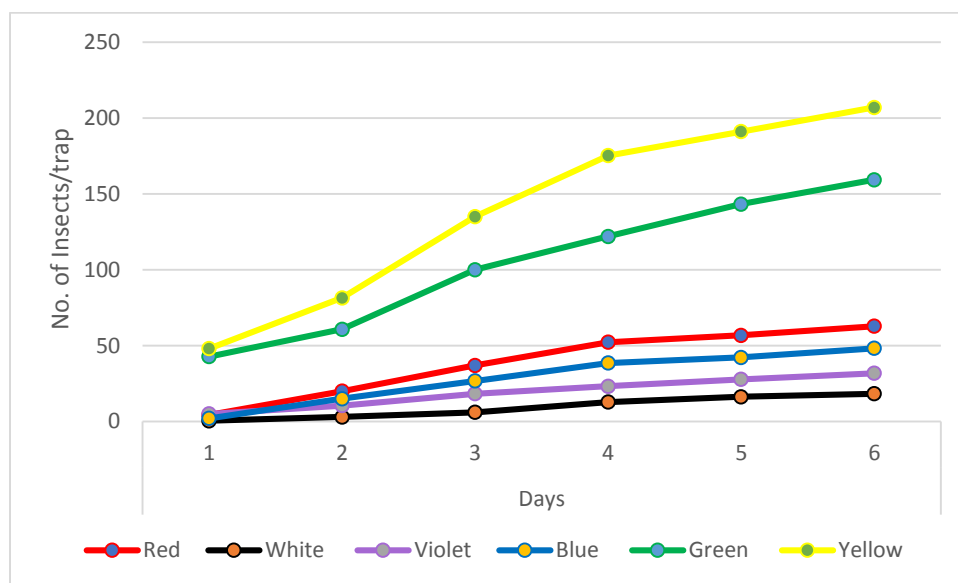
##### 4.1. WHITEFLY

It was reported that whiteflies are attracted to yellow (Berlinger, 1980; Webb *et al.*, 1985; Kitterman, 1997; C.-C. Chu & Henneberry, 1999; Mwangi, 2015; Perdakis *et al.*, 2016) and

green colors(YANo, 1987). YANo (1987) mentioned a number of combined means of whitefly management including yellow sticky traps. They used yellow sticky traps with biological control; however, yellow traps

provided better results (YANo, 1987). The results of this study accepted with YANo (1987) in terms of color attraction. Whiteflies were significantly attracted to yellow and green colors compared to the other colors (Figure 3, and Table 2). It can be noticed from Figure 3 that the number of insects captured by the traps is

dramatically increasing at the beginning, and then the curve starts to become steady at the end of the study. This is because the insect population was decreased. After finalizing this study, the traps were renewed and installed inside the greenhouses without using pesticides, the insect was totally controlled.



**Fig. (3):** The mean number of whiteflies captured by the different colored-traps in 6 days in 4 replications.

Overall, the response of whiteflies to different colored-traps in 6 days varied in a way that yellow color attracted more insects (828 insects), followed by green (637 insects), red

(251 insects), blue (193 insects), violet (127 insects) and white which captured the least number of insects (73 insects) (Table 2 and Figure 3).

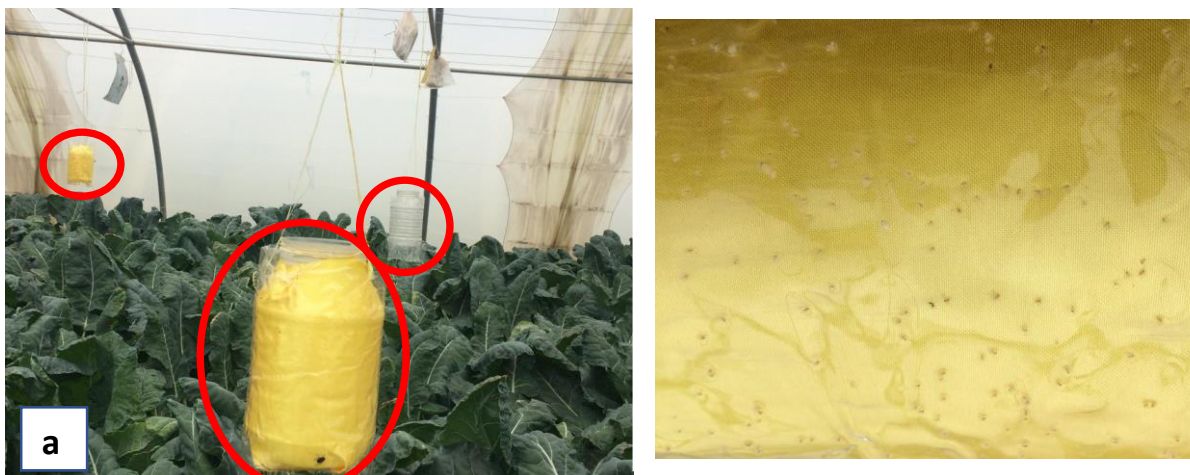
**Table (2):** Effect of colors, days and their interactions on the number of whitefly insect on broccoli.

Days	Colors						Means of days
	Blue	Green	Red	Violet	White	Yellow	
1	2.0	42.8	4.2	5.0	0.5	48.0	17.1
2	15.0	60.7	20.0	10.5	3.0	81.5	31.8
3	26.7	100.0	37.0	18.2	6.0	135.0	53.8
4	38.5	122.0	52.2	23.2	12.7	175.2	70.7
5	42.2	143.2	56.7	27.7	16.2	191.0	79.5
6	48.2	159.2	62.7	31.7	18.2	207.0	87.9
<b>Mean of colors</b>	28.8	104.7	38.8	19.4	9.5	139.6	

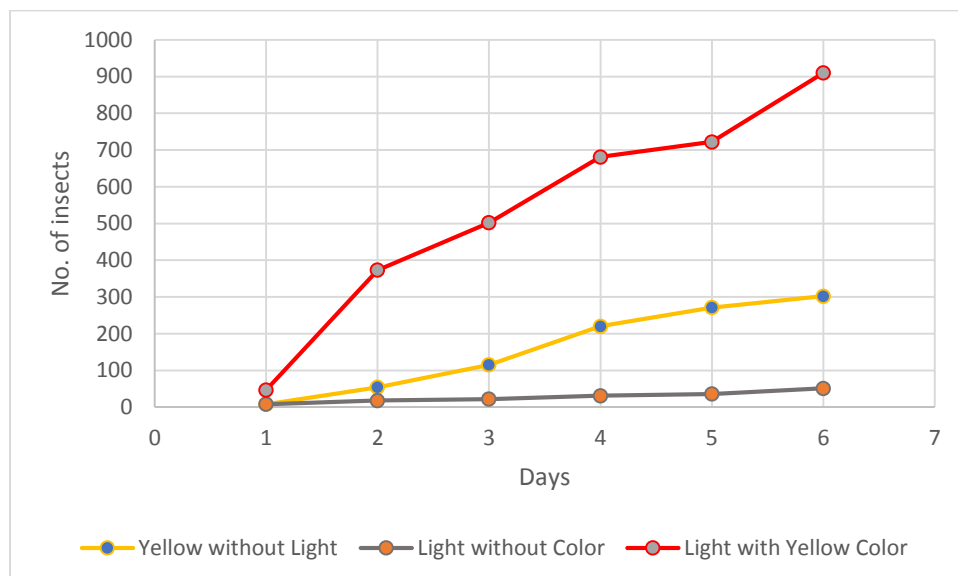
LSD values: Colors: 16.82, Days:16.82, Colors\*Days:41.20

After determining the most attracted color to capture the whiteflies, it was crucial to investigate whether the color only, the light only or combining both color and light is attracting the insect (Figure 4). The results supported the third hypothesis that the combined (colored-light) traps will trap more insects than light or color only. The results showed that a higher number of whiteflies were captured by the light-yellow colored traps (910 insects) than both yellow traps without light (302 insects) and light without color (51 insects) in 6 days (Figure 5). Although whiteflies are diurnal insects (Mutwiwa & Tantau, 2005), this study showed that they are active

and have response to colored-light even when there is another source of light (Figure 5). A special UV traps were used by Mutwiwa & Tantau (2005) to capture whiteflies inside greenhouses in northern Germany; yet, they captured the nocturnal insects. Although they increased the intensity of UV light, the number of captured whiteflies was not significant to depend on such trap as a management mean (Mutwiwa & Tantau, 2005). However, this study showed that whiteflies can be captured by the yellow-light traps about 20 times more than light traps without color, and 3 times more than yellow traps.



**Fig. (4):** (a) The color only, the light only and the combination of both color and light traps. (b) Whiteflies captured by the combination of both color and light trap.

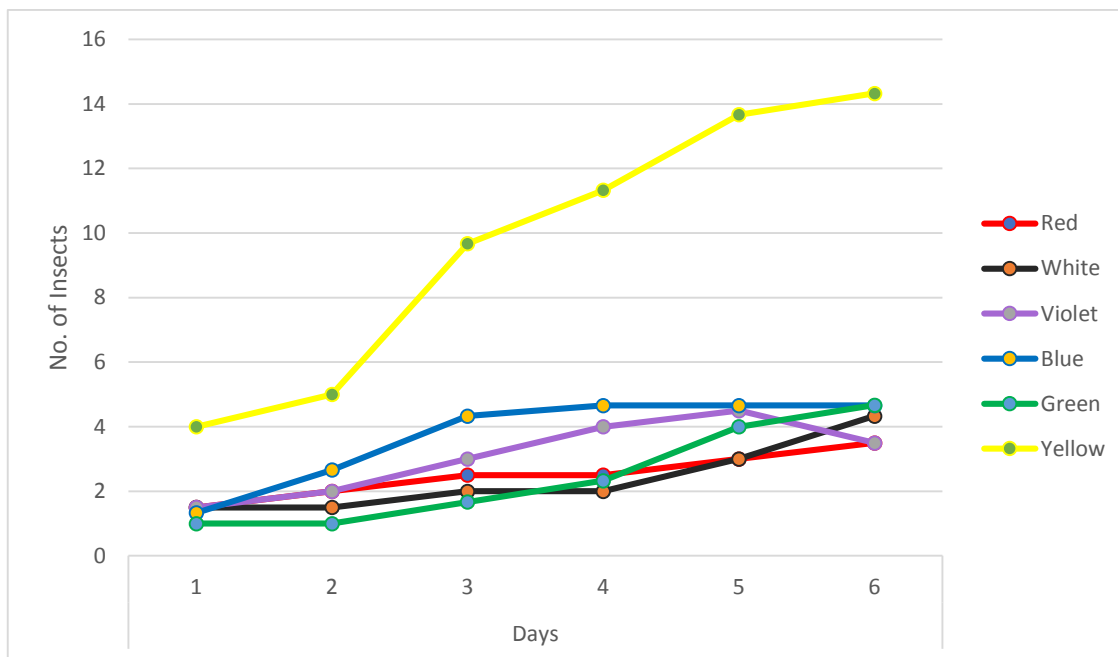


**Fig. (5):** The number of insects captured by three types of traps (yellow without light, light without color and light with yellow color) in 6 days.

#### 4.2. TOMATO LEAF MINER

Regarding tomato leaf miner, the results showed higher mean number of leaf miners captured by yellow traps (14.33) followed by

green traps (4.66), blue traps (4.66), white traps (4.33), red (3.5) and violet (3.5) traps respectively (Figure 6 and Table 3).



**Fig. (6):** The mean number of leaf miners captured by the different colored-traps in 6 days.

It was reported that yellow traps and pheromone traps have been used to trap tomato leaf miner in greenhouses (SALAS, 2004; Cabello *et al.*, 2012; Cocco *et al.*, 2012; 2013 and Tisia *et al.*, 2016). Yet, they were used for monitoring purpose only (Tisia *et al.*, 2016). The limitation of pheromone traps is their ability to attract the male insects mainly. Therefore, this type of trap can generally be used for monitoring purpose. Abbas & Chermiti (2012) discussed many reasons of why mass trapping by pheromone and biological control are not successful means to control this pest. As a nocturnal insects, tomato leaf miner is attracted to light (Mahmoud *et al.*, 2014); therefore, it was logical to combine colors with the lights to trap this insect.

Without proper management, leaf miner causes significant damage and losses in tomato fields (Garzia *et al.*, 2012; Pezhman & Saeidi,

2018; Wafula *et al.*, 2018). Our attempts to control this important pest varied, and we used different means of management techniques. Following the literature (Al-Jboory *et al.*, 2012; Abbas, 2014; Mahmoud *et al.*, 2014; Bercxolli & Sh, 2017; Pezhman & Saeidi, 2018; Wafula *et al.*, 2018), in addition to our attempts, the pest is getting resistant to almost all types of insecticides very quickly. Moreover, considering the key points recommended by Pezhman & Saeidi (2018) and Wafula *et al.* (2018), we developed our new trap, and named it Good Luck Tuta (GLT) trap. According to our field experiences and practical work, all means of tomato leaf miner control have their own limitations. All means and techniques were not enough to manage this pest; yet, after using of test GLT trap, the pest was totally controlled. This was the reason of conducting this study after observing the primary results.

**Table (3):** Effect of colors, days and their interactions on the number of Tomato leaf miner insects on tomato.

Days	Colors						Means of days
	Blue	Green	Red	Violet	White	Yellow	
1	1.33	1.00	1.00	0.67	1.00	4.00	1.5
2	2.67	1.00	1.33	1.33	1.00	5.00	2.06
3	4.33	1.67	1.67	2.00	2.00	9.67	3.56
4	4.67	2.33	1.67	2.67	2.00	11.33	4.11
5	4.67	4.00	2.00	3.00	3.00	13.67	5.06
6	4.67	4.67	2.33	3.00	4.33	14.33	5.56
<b>Mean of colors</b>	3.75	2.44	1.67	2.11	2.22	9.67	

LSD values: Colors: 1.902, Days: 1.902, Colors\*Days: 4.658

## 5. CONCLUSION

GLT trap is an environmental friendly, inexpensive, reliable and suited to any place in the world (including developing countries), and an effective way to manage whiteflies and tomato leaf miner. In addition, it is considered an excellent way to overcome the problem of pest resistance to insecticides. Moreover, it may overcome the limitations of the other types of traps. In order to improve this type of trap, a number of points are recommended. First, it can be further improved by providing a better source of light which can be last till morning. Second, it can be recommended to use the GLT trap to manage both diurnal and nocturnal insects. Therefore, further studies are required to examine the effect of GLT trap on other harmful insects. Furthermore, the traps should be placed in between the rows with placing a suitable container under the traps in order to gather the glue that drops from the trap. It is also recommended not to use this type of trap when biological control or pollinators are used in the greenhouses. This is because it captured some other insects as well. Thus, further studies are required to examine its effect on beneficial insects.

## 6. REFERENCES

Abbes, K., and Chermiti, B. (2012). Failure of the biological control of *Tuta absoluta* using the

predator *Nesidiocoris tenuis* in a protected tomato crop: analysis of factors. *IOBC/WPRS Bull*, 80, 231-236.

Abbas, S. (2014). Tomato leaf miner *Tuta absoluta* (Meyrick, 1917)(Lepidoptera: Gelechiidae) The old and new challenge.

Al-Jboory, I. J., Katbeh-Bader, A., & Al-Zaidi, S. (2012). First observation and identification of some natural enemies collected from heavily infested tomato by *Tuta absoluta* (Meyrick)(Lepidoptera: Gelechiidae) in Jordan. *Middle-East Journal of Scientific Research*, 11(4), 435-438.

Aksoy, E., & Kovanci, O. B. (2016). Mass trapping low-density populations of *Tuta absoluta* with various types of traps in field-grown tomatoes. *Journal of Plant Diseases and Protection*, 123(2), 51-57.

Ashfaq, M., Khan, R. A., Khan, M. A., Rasheed, F., & Hafeez, S. (2005). Insect orientation to various color lights in the agricultural biomes of Faisalabad. *Pak. Entomol*, 27(1), 49-52.

Berlinger, M. J. (1980). A yellow sticky trap for whiteflies: *Trialeurodes vaporariorum* and *Bemisia tabaci* (Aleurodidae). *Entomologia experimentalis et applicata*, 27(1), 98-102.

Berxolli, A., & Sh, S. (2017). Friendly using methods for controlling of *Tuta absoluta*



- (Meyrick)(Lepidoptera: Gelechiidae). *JMEST*, 4(9), 8171-8175.
- Cabello, T., Gallego, J. R., Fernandez, F. J., Gamez, M., Vila, E., Del Pino, M., & Hernandez-Suarez, E. (2012). Biological control strategies for the South American tomato moth (Lepidoptera: Gelechiidae) in greenhouse tomatoes. *Journal of economic entomology*, 105(6), 2085-2096.
- Cocco, A., Deliperi, S., & Delrio, G. (2012). Potential of mass trapping for *Tuta absoluta* management in greenhouse tomato crops using light and pheromone traps. *IOBC-WPRS Bull*, 80, 319-324.
- Cocco, A., Deliperi, S., & Delrio, G. (2013). Control of *Tuta absoluta* (Meyrick)(Lepidoptera: Gelechiidae) in greenhouse tomato crops using the mating disruption technique. *Journal of Applied Entomology*, 137(1-2), 16-28.
- Chen, T.-Y., Chu, C.-c., Henneberry, T. J., & Umeda, K. (2004). Monitoring and trapping insects on poinsettia with yellow sticky card traps equipped with light-emitting diodes. *HortTechnology*, 14(3), 337-341.
- Chu, C.-C., & Henneberry, T. J. (1999). Whitefly trap: Google Patents.
- Chu, C., & Henneberry, T. (1998). Development of a new whitefly trap. *J. Cotton Sci*, 2, 104-109.
- Ekbom, B. S. (1982). Diurnal activity patterns of the greenhouse whitefly, *Trialeurodes vaporariorum* (Homoptera: Aleyrodidae) and its parasitoid *Encarsia formosa* (Hymenoptera: Aphelinidae). *Protection Ecology (Netherlands)*.
- Ettaib, R., Belkadhi, M. S., Belgacem, A. B., Aoun, F., Verheggen, F., & Megido, R. C. (2016). Effectiveness of pheromone traps against *Tuta absoluta*. *Journal of Entomology and Zoology Studies*.
- Garzia, G. T., Siscaro, G., Biondi, A., & Zappalà, L. (2012). *Tuta absoluta*, a South American pest of tomato now in the EPPO region: biology, distribution and damage. *EPPO Bulletin*, 42, 205-210.
- Gillespie, D. R., & Quiring, D. (1987). Yellow sticky traps for detecting and monitoring greenhouse whitefly (Homoptera: Aleyrodidae) adults on greenhouse tomato crops. *Journal of economic entomology*, 80(3), 675-679.
- Gillespie, D. R., & Quiring, D. J. (1992). Flight behavior of the greenhouse whitefly, *Trialeurodes vaporariorum* (Westwood)(Homoptera: Aleyrodidae), in relation to yellow sticky traps. *The Canadian Entomologist*, 124(5), 907-916.
- González-Cabrera, J., Mollá, O., Montón, H., & Urbaneja, A. (2011). Efficacy of *Bacillus thuringiensis* (Berliner) in controlling the tomato borer, *Tuta absoluta* (Meyrick)(Lepidoptera: Gelechiidae). *BioControl*, 56(1), 71-80.
- Hamza, R. (2017). *Enhancement of tomato resistance to Tuta absoluta by the expression of two barley proteinase inhibitors* (Doctoral dissertation), *Department of Biotechnology, Universitat Politècnica de València*.
- Husin, B., & Ali, T. O. (2017). Biological control of tomato leaf miner *Tuta absoluta* using entomopathogenic nematodes (Doctoral Dissertation), *School of Biology Faculty of Science, Agriculture and Engineering, Newcastle University United Kingdom*.
- Kitterman, R. L. (1997). *U.S. Patent No. 5,634,292*. Washington, DC: U.S. Patent and Trademark Office.
- Korycinska, A., & Moran, H. (2009). South American tomato moth *Tuta absoluta*. *South American tomato moth Tuta absoluta*.
- Lazgeen, H. A., Feyroz, R. H., Halgurd, R. I., & Salah, A. S. (2013). Population density of tomato leaf miner *Tuta absoluta* (Meyrick)(Lepidoptera: Gelechiidae) under plastic houses conditions. *International Organization of Scientific Research Journal of Agriculture and Veterinary Science*, 5(4), 7-10.
- Lu, Y., Bei, Y., & Zhang, J. (2012). Are yellow sticky traps an effective method for control of sweetpotato whitefly, *Bemisia tabaci*, in the greenhouse or field?. *Journal of insect science*, 12(1), 113.
- Macdowall, F. D. (1972). Phototactic action spectrum for whitefly and the question of colour vision. *The Canadian Entomologist*, 104(3), 299-307.
- Mahmoud, Y., Ebadah, I., Abd-Elrazik, A., Abd-Elwahab, T., & Deif, S. (2014). Efficiency of different colored traps baited with pheromone in capturing tomato adult moth, *Tuta absoluta* (meyrick)(lepidoptera: Gelechiidae) during

- summer plantation. *World Applied Sciences Journal*, 30(4), 406-412.
- Mutwiwa, U. N., & Tantau, H. J. (2005). Suitability of a UV lamp for trapping the greenhouse whitefly *Trialeurodes vaporariorum* Westwood (Hom: Aleyrodidae). *Agricultural Engineering International: CIGR Journal*.
- Mwangi, N. (2015). Evaluation of Botanical pesticides and colored sticky insect traps for management of insect pests (Thrips, White flies and Aphids) in french beans (*Phaseolus vulgaris*). *University of Nairobi*.
- Perdikis, D. C., Arvaniti, K. A., & Papadimitriou, D. M. (2016). Effects of sticky traps on *Dacnusa sibirica*, *Diglyphus isaea* and *Nesidiocoris tenuis*. *Entomologia Hellenica*, 25(1), 1-11.
- Pezhman, H., & Saeidi, K. (2018). Effectiveness of Various Solar Light Traps With and Without Sex Pheromone for Mass Trapping of Tomato Leaf Miner (*Tuta absoluta*) in a Tomato Field. *Notulae Scientia Biologicae*, 10(4), 475-484.
- Roda, A. L., Brambila, J., Barria, J., Euceda, X., & Korytkowski, C. (2015). Efficiency of trapping systems for detecting *Tuta absoluta* (Lepidoptera: Gelechiidae). *Journal of economic entomology*, 108(6), 2648-2654.
- SALAS, J. (2004). Capture of *Tuta absoluta* (Lepidoptera: Gelechiidae) in traps baited with its sex pheromone. *Revista Colombiana de Entomología*, 30(1), 75-78.
- Steiner, M. Y., Spohr, L. J., Barchia, I., & Goodwin, S. (1999). Rapid estimation of numbers of whiteflies (Hemiptera: Aleyrodidae) and thrips (Thysanoptera: Thripidae) on sticky traps. *Australian Journal of Entomology*, 38(4), 367-372.
- Torres, J. B., Evangelista, W. S., Barras, R., & Guedes, R. N. C. (2002). Dispersal of *Podisus nigrispinus* (Het., Pentatomidae) nymphs preying on tomato leafminer: effect of predator release time, density and satiation level. *Journal of Applied Entomology*, 126(6), 326-332.
- Tsisia, C., Kakhadze, M., Malania, I., Chubinishvili, M., Skhirtladze, R., & Rizhamadze, I. (2016). New Technology Plant Protection from Pest Insects in Closed Environment of Georgia. *International Journal of Agricultural Technology*, 12(7.2), 2203-2210.
- Vacas, S., Alfaro, C., Primo, J., & Navarro- Llopis, V. (2011). Studies on the development of a mating disruption system to control the tomato leafminer, *Tuta absoluta* Povolny (Lepidoptera: Gelechiidae). *Pest management science*, 67(11), 1473-1480.
- Varga, M., Oltean, I., & Florian, T. (2018). Efficacy of Pheromone Traps/Yellow and Blue Sticky Panels and other Biological Methods to Fight against Western flower Thrips at Offer Madsen Gartneriet A/S Glamsbjerg, Denmark. *ProEnvironment 11*, 170-179.
- Wafula, G., Waceke, J., & Macharia, C. (2018). Role of Mass Trapping in the Management of Leafminer (*Tuta absoluta*) on Tomato in the Central Highlands of Kenya. *Journal of Agriculture and Life Sciences Vol*, 5(1).
- Webb, R. E., Smith, F. F., Affeldt, H., Thimijan, R. W., Dudley, R. F., & Webb, H. F. (1985). Trapping greenhouse whitefly with coloured surfaces: variables affecting efficacy. *Crop Protection*, 4(3), 381-393.
- YANo, E. (1987). Control of the greenhouse whitefly, *Trialeurodes vaporariorum* Westwood (Homoptera: Aleyrodidae) by the integrated use of yellow sticky traps and the parasite *Encarsia formosa* Gahan (Hymenoptera: Aphelinidae). *Applied Entomology and Zoology*, 22(2), 159-165

دروست کرنا ته لهه کا میٹس ومورا بو ژناڅیرنا پېشکا سپی (*Bemisia tabaci*) وپه روانا په له پېژنا  
ته ماتې (*Tuta absoluta*)

## پوخته

پیشکا سپی *Bemisia tabaci* و پهروانا په له پیزا ته ماتئ *Tuta absoluta* دهینه هژمارتن ژ گرنکترین میښ و موریت زیانیت مه زن دگه هیننه زهره واتی دناف چاندنا نخافتی دا. گازیه کا جیهانی یا هه ی دا چاره سه رکر نه کا بی قرکه ر بو ژ ناقبرنا قان هه ردوو میښ و موورا بهیته کرن. ته له هک هاته دروست کرن کو رونا هی هاتیه کومکرن دگه ل هژماره کا ره نگا ژبو دیارکرن چالاکی و کارتیکنرنا وی دکونترول و ژ ناقبرنا پیشکا سپی و پهروانا په له پیزا ته ماتئ. نه نجاما دیارکر کو پیشکا سپی بشپوه کئ بهرچاف به ره ف ته لهیته رونا هیئ یته ره نگئ زهرقه دچیت (828 پیشک) ول دویقدا یته ره نگئ که سک (637 پیشک) و پاشی یته ره نگئ سور (251 پیشک) و ره نگئ شین (193 پیشک) و ره نگئ مور (127 پیشک) ول دویقدا ره نگئ سپی کو نرمترین هژمارا پیشکان گرت (73 پیشک) د ماوی شه ش روژاندا. سه ره رای وی چه ندی کو پیشکا سپی میښ و مور ه کا روژی به، مه زنتترین هژمارا پیشکا هاته گرتن ب ته لهیته رونا هیئ یته زهر (910 پیشک) ب به راورد دگه ل ته لهیته ره نگئ زهر بی رونا هی (302 پیشک) و هه روه سا ته لهیته رونا هیئ بی ره نگ (51 پیشک). ل قیرئ دیاردیبت زالبونا ته لها GLT ب ریژا نیژیکی 3 جارا پتر ژ ته لهیته ره نگئ زهر یته بی رونا هی و نیژیکی 20 جارا پتر ژ ته لهیته رونا هیئ یته بی ره نگ دماوی شه ش روژاندا. بلندترین ناقینئ هژمارتنا په روانیته په له پیزا ته ماتئ هاتنه تومارکرن لسه ر ته لهیته رونا هیئ یته ره نگئ زهر (14.33) ول دویقدا ل سه ر ته لهیته رونا هیئ یته ره نگئ که سک و شین (4.66) بو هه ر نیکی ژوان ته لها. ول دویدا ته لهیته سپی (4.33) و ته لهیته سو رو مور (3.5) بو هه ر نیکی ژوان ته لها. ته لهیته GLT دیارکر کو ده رگه هئ پاشه روژی به بو بنبرکرن هه مه لایه ن یا ده ردان IPM بو سه ره ده ریئ دگه ل قان هه ردوو میښ و موریت گرنگ د چاندنا نخافتی دا و یا گونجایه بو وه لاتیته پیشکه فتی و پیش نه که فتی. ژبه رکو نه ف جورئ ته لهی یئ بها نه رزانه و باندوره و چیکرنا خومالیه بو ژ ناقبرنا پیشکا سپی و پهروانا په له پیزا ته ماتئ و بی زیانیت تیکده ری.

تصميم مصيدة حشرات جديدة لادارة الذبابة البيضاء (*Bemisia tabaci*) و حفار اوراق الطماطة (*Tuta absoluta*)

## الخلاصة

تعتبر الذبابة البيضاء *Bemisia tabaci* الى جانب حفار اوراق الطماطة *Tuta absoluta* من اهم الحشرات التي تصيب محاصيل الخضر في البيوت المحمية والتي تحدث ضرر كبير لها. هناك نداء عالمي لايجاد طريقة غير معتمدة على المبيدات لادارة هاتين الافتين. تم تصميم مصيدة تعتمد في الية عملها على الربط ما بين الاضاءة والوان مختلفة لدراسة مدى كفاءتها في مكافحة هاتين الحشرتين. اظهرت النتائج ان الذبابة البيضاء تنجذب بشكل كبير الى مصائد الضوء الصفراء اللون

(828 حشرة) تليها الخضراء (637 حشرة) ومن ثم الحمراء (251 حشرة) والزرقاء (193 حشرة) والبنفسجية (127 حشرة) والبيضاء التي اصطادت اقل عدد من الحشرات (73 حشرة) خلال ستة ايام. بالرغم من كون الذبابة البيضاء حشرة نهائية الا انه تم اصياد اكبر عدد من الحشرات بواسطة المصائد الضوئية الصفراء (910 حشرة) مقارنة بالمصائد الصفراء بدون ضوء (302 حشرة) والمصائد الضوئية الشفافة بدون الوان (51 حشرة). وهذا يظهر تفوق مصائد GLT بحوالي ثلاث مرات على المصائد الصفراء بدون ضوء وحوالي 20 مرة اكثر من المصائد الضوئية الشفافة بدون لون خلال ستة ايام. تم تسجيل اعلى متوسط لحافرات اوراق الطماطة في مصائد الضوء الصفراء (14.33) وتليها المصائد الخضراء والزرقاء (4.66) لكل منها. ومن ثم البيضاء (4.33) والحمراء والبنفسجية (3.5) لكل منها. اظهرت مصائد GLT انها وسيلة واداة واعدة في ادارة مكافحة التكاملة (IPM) في ادارة هاتين الحشرتين المهمتين في البيوت المحمية والمناسبة للدول المتقدمة وغير المتقدمة. كون هذه المصيدة غير مكلفة و فعالة و محلية الصنع لادارة الذبابة البيضاء و حفار اوراق الطماطة وبدون ضرار جانبية.